

NOTES:-

1. SUPPLY OF FIXING BOLTS NUTS & WASHERS FOR GI FLAT EARTHING CONDUCTOR IS ALSO FORMS PART OF THE SCOPE.
2. TO BE USED FOR CONNECTING DOWN CONDUCTOR OF LIGHTNING PROTECTION SYSTEM, CVT & LA.
3. PIPE SLEEVE ENDS SHALL BE SEALED AFTER COMPLETION OF WORK.



## EQUIPMENT EARTHING DETAILS

### ROD EARTH ELECTRODE WITH TEST PIT

COMPU. DRG. REF.

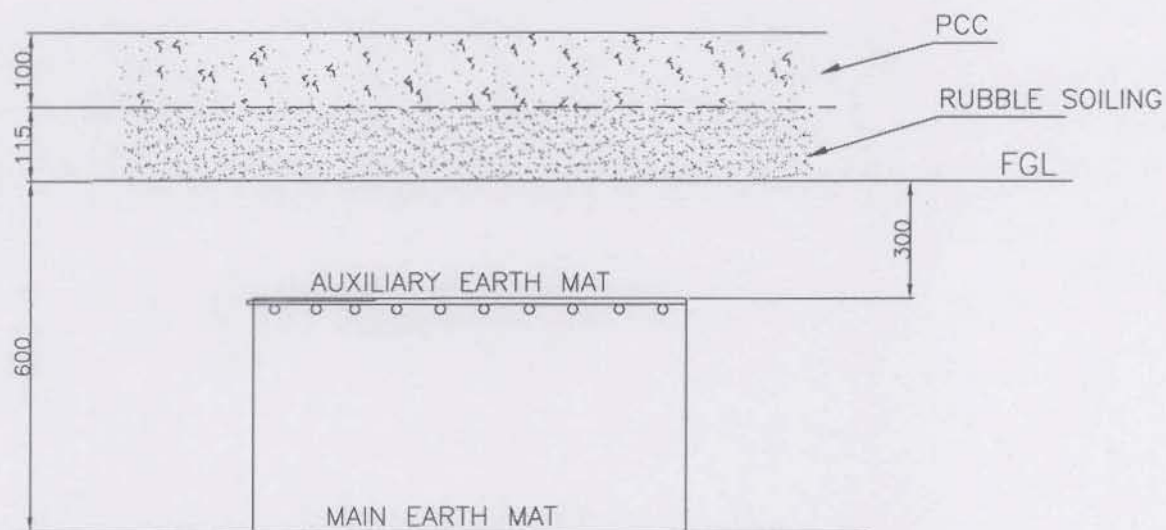
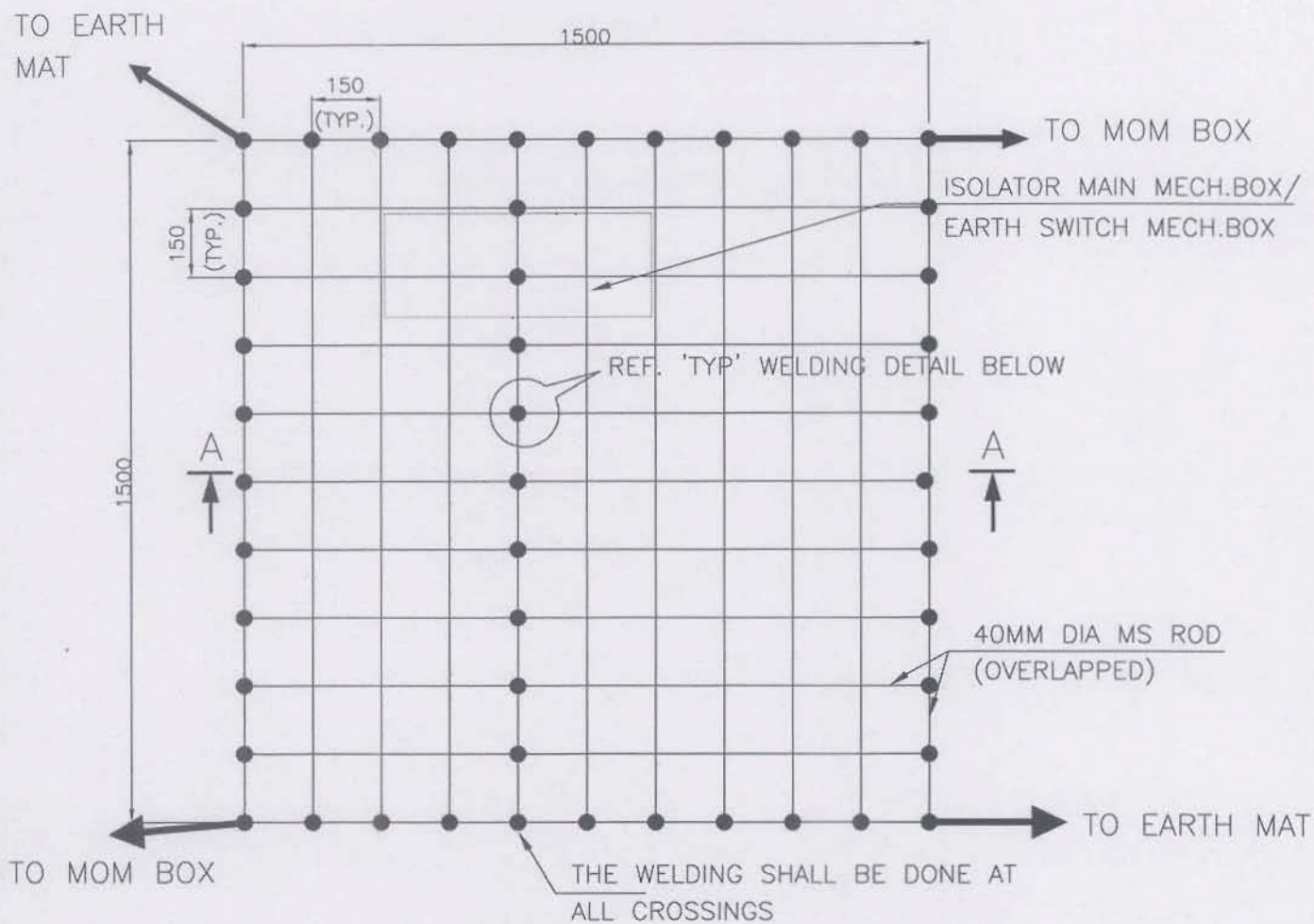
DRG. No.

TB-04-274-509-028

REV. 01

SHEET No.

11



### SECTION AA

#### NOTE:

AUX. EARTH MAT SHALL BE SO POSITIONED THAT THE FOOT OF THE OPERATOR ALWAYS LIE OVER THE AUX. EARTH MAT AREA WHILE ATTENDING / OPERATING THE MECH. BOX THE CABLE TRENCH ROUTING SHALL BE PLANNED ACCORDINGLY.



## EQUIPMENT EARTHING DETAILS

### AUXILIARY EARTH MAT FOR ISOLATOR MAIN MECH., E/S MECH. BOX & CB (TYP.)

COMPU. DRG. REF.

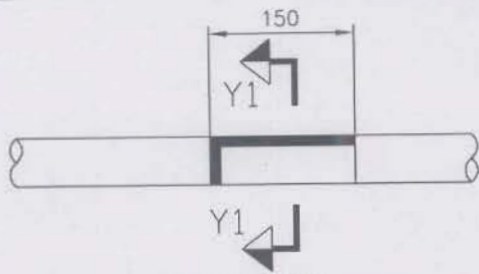
Report No.

TB-04-274-509-028

REV. 01

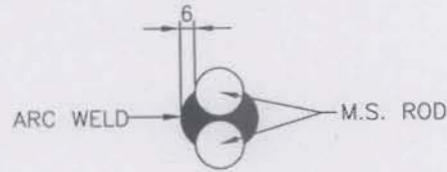
SHEET No.

14

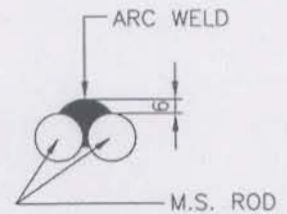


ELEVATION

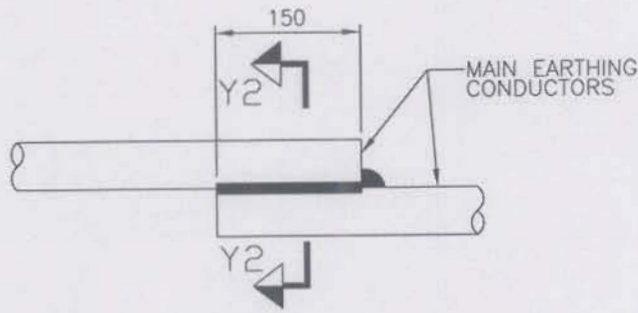
(CONDUCTOR IN HORIZONTAL PLANE)



SECTION Y2-Y2

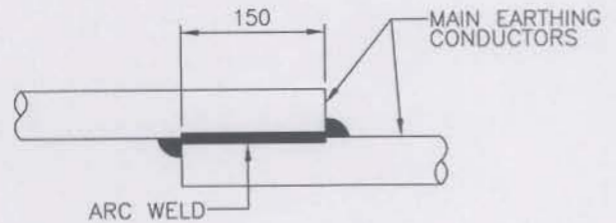


SECTION Y1-Y1

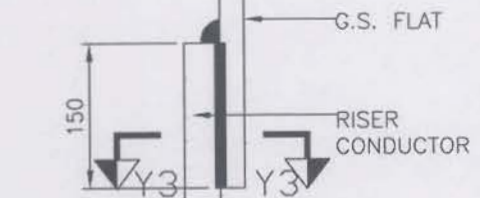


ELEVATION

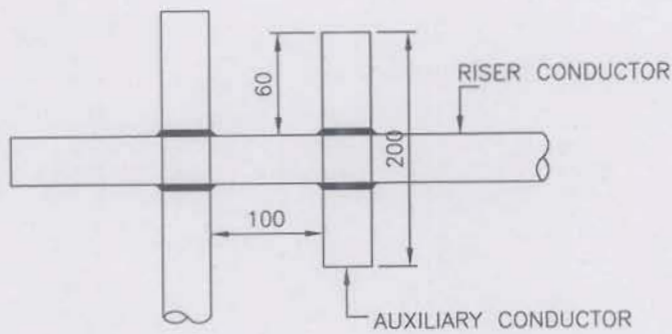
(CONDUCTOR IN VERTICAL PLANE)



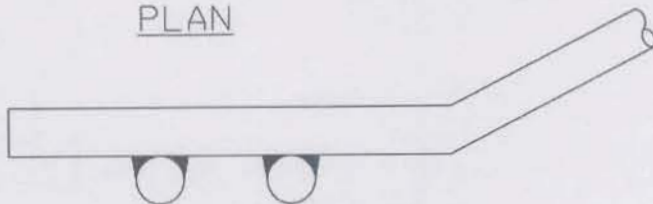
ARC WELD



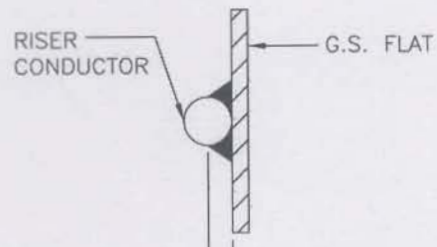
ELEVATION  
DETAIL-A



PLAN



ELEVATION  
DETAIL-B



SECTION Y3-Y3

TYPICAL OVERLAPPING JOINT OF TWO CONDUCTORS



## EQUIPMENT EARTHING DETAILS

### WELDING DETAILS

COMPUTERREF.NO.

DRG. No.

TB-04-269-509-028

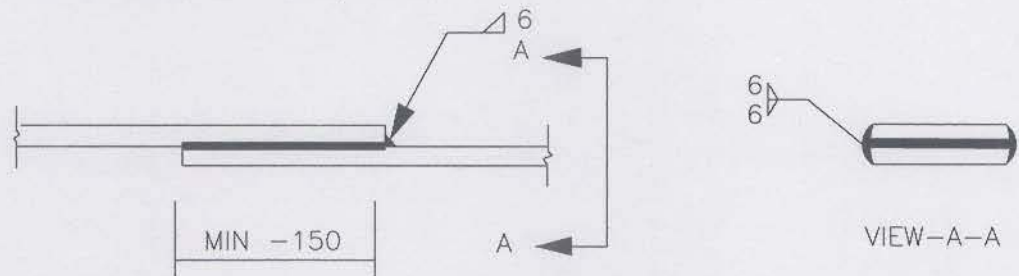
REV. 01

SHEET No.  
20

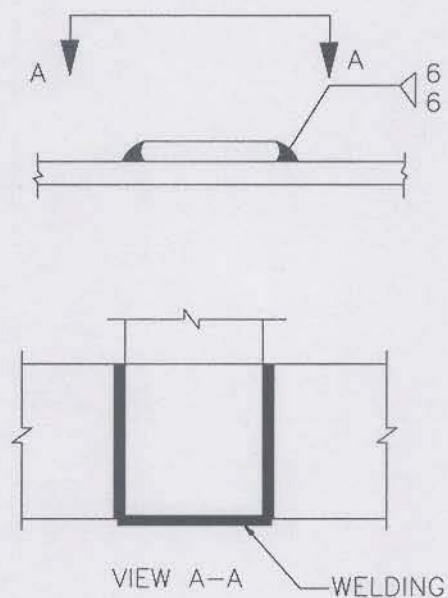


## STRIP TO STRIP WELDING DETAILS

### 1. STRAIGHT LAP JOINT/RISER



### 2. CROSS LAP JOINT



EQUIPMENT EARTHING DETAILS  
WELDING DETAIL - STRIPS